

CONVERT *CGM to Vector™*



Convert CGM files to vector PDF, EPS and SVG files.

Convert CGM vector elements, including lines, text, Bezier curves and filled paths, to an equivalent to SVG, PDF or EPS format, preserving fonts and retaining graphical accuracy. An excellent tool for technical publishing professionals, requiring the conversion of technical drawings and illustrations in the CGM format. This is a true vector to vector conversion that produces high quality graphics.

The new SVG output option is ideal for HTML5 publishing applications, retaining WebCGM interactivity, a CGM viewing mechanism for mobile devices.

General Features:

- Convert Single or Batches of CGM files
- Click to view PDF files
- Ignores files with errors, creates text log for post conversion investigation
- Line width scaling options
- Document Scaling:
 - Scale to fit a specified size or scale by percent.

SVG Output Features:

- Convert all versions of CGM to SVG
- Output Text as SVG text with font information
- Supports embedded raster images
- Preserves WebCGM metadata:
 - hotspot regions, links and screen tips.

Desktop Version

Compliant with Windows based computers. Provides an easy to use interface, simply select the CGM files for conversion, choose the output format, and the directory for the newly converted files.

Server Version

Operates in command line mode using control parameters, providing the ability to "automate and configure" your conversion work-flow.

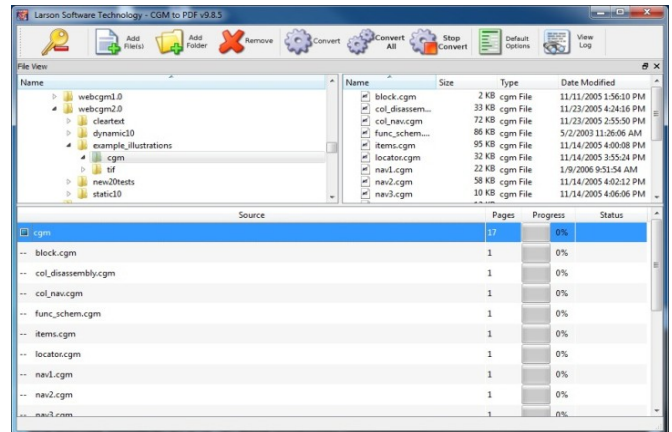
Network Compatible

Easy digital asset management for your computers, servers, or storage arrays.

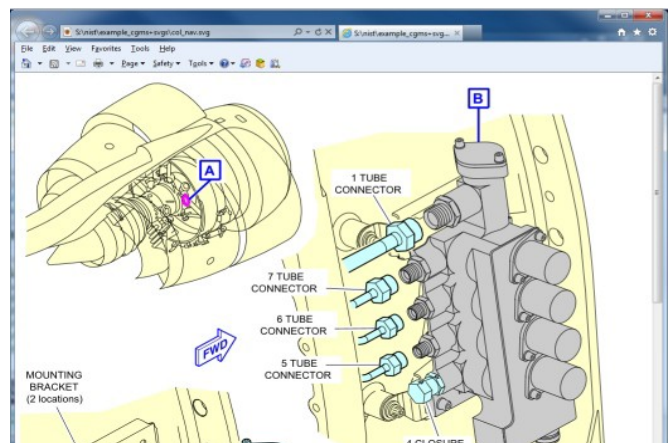
Software Development Kit (SDK)

Integrate the Larson CGM to Vector technology into third party applications.

Graphical User Interface



SVG viewed in Web Browser



License: Perpetual

Versions: Desktop, Server and SDK

Platforms: Windows 7, 8 and 10, Server

2008 and later, Linux

Input: CGM v1-4

Input Profiles: ATA, CALS, PIP, S1000D, WebCGM

Output: PDF, EPS and SVG

