

# CONVERT *Image to CGM™*



Convert Illustrations, Maps, and Schematics into CGM files.

Convert Image to CGM is a flexible and easy to use solution for converting scanned images to the CGM format. CGM is commonly thought of as a vector format, but CGM V3 and above includes the support for raster files.

If you need to exchange graphics in the CGM format, Convert Image to CGM will solve work-flow issues with a minimum of fuss.

Advanced features include color swapping, compression for monochrome images, and batch conversion. Server versions include access to the command-line interface for automated conversion.

## Convert Image to CGM Features:

- Convert Single or Batches of files - saving you time!
- Raster to Raster Conversion
- DPI - dots per inch resolution control
- Options for compressions, image quality, grayscale, Size (pixels, inches, metric), Aspect Ratio, Gamma, and Rotation.

## Desktop Version

Compliant with Windows based computers. Provides an easy to use interface, simply select the Image files for conversion, choose the output format, and the directory for the newly converted files.

## Server Version

Operates in command line mode using control parameters, providing the ability to "automate and configure" your conversion work-flow.

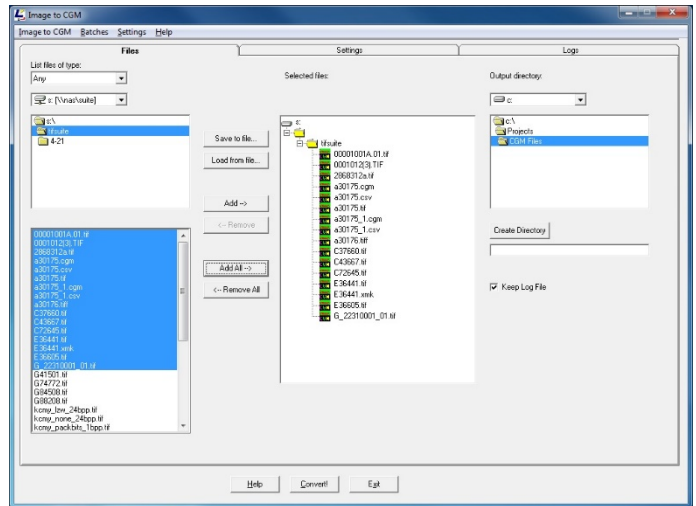
## Network Compatible

Easy digital asset management for your computers, servers, or storage arrays.

## Software Development Kit (SDK)

Integrate the Larson CGM to Vector technology into third party applications.

## Graphical User Interface



**License:** Perpetual

**Versions:** Desktop, Server and SDK

**Platforms:** Windows 7, 8 and 10, Server

2008 and later, Linux

**Input:** BMP, CALS, GIF, JPEG, PNG, TIFF, & XWD

**Output:** CGM v3-4

**Input Profiles:** ATA, CALS, PIP, S1000D, WebCGM

